



Professional NDT Products Supplier!



Sonostar Technologies Co., Limited

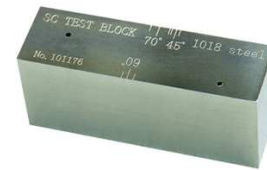
Ultrasonic Test Block



Phased Array A Modle **HOT**



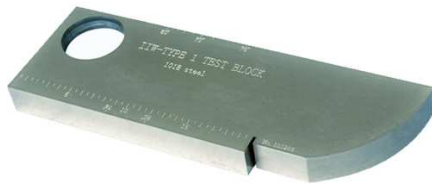
Phased Array B Modle **HOT**



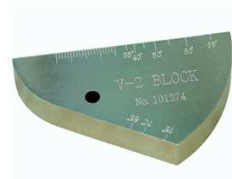
SC



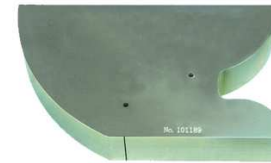
DC



V1(IIW1)



V2(IIW2)



V3



DSC



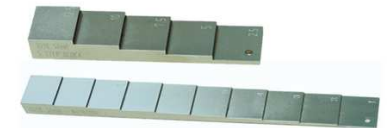
A5(IOW)



RC



DS



Steps

Provide customized service, according to your request of application or drawing, standard and material.

Ultrasonic Test Block



A3



Welded Flawed



AUT



Curved Step



A7



ASME



TOFD



JIS-STB-G



Phased Array Calibration



Weld-pipe check



Sensitivity



Roll-over stand

Provide certificate of the blocks.

Provide OEM service.



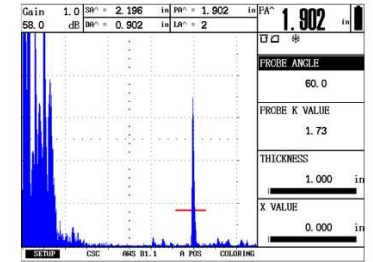
Ultrasonic Flaw Detector



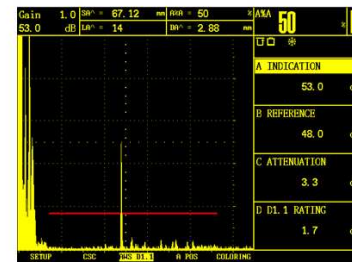
S60 Digital Ultrasonic Flaw Detector is a highly efficiency portable, intuitive instrument. Its blend of efficient menus and direct access keys allows you to take advantage of the highest quality flaw detection platform with exceptional ease of use.



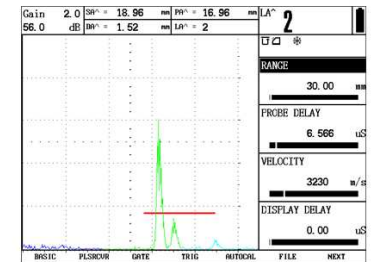
Thickness Data-logger



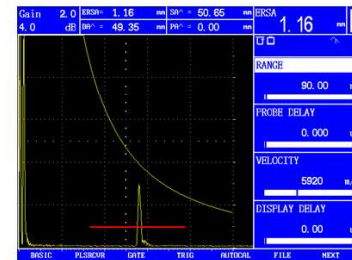
Trigonometric flaw location



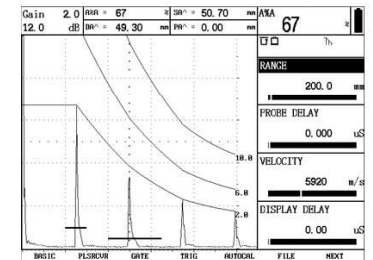
Weld Rating Calculation



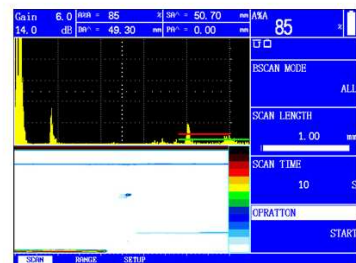
A-Scan dynamically



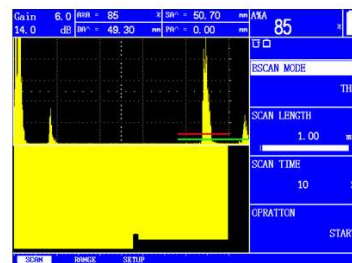
Distance Gain Size



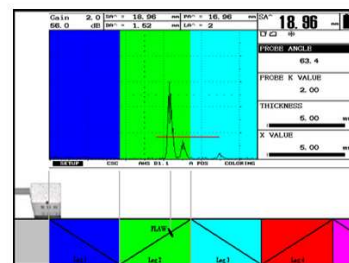
Dynamic multiple curve



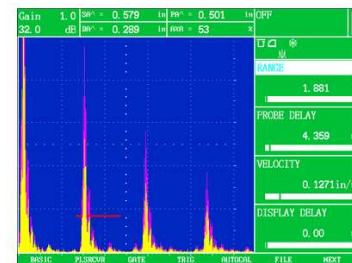
Corrosion-featured B-scan



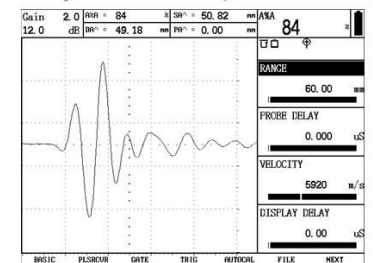
Full-featured B-scan



Color Leg



Compare frozen waveforms



RF display

Thickness Gauges

ST-1	P-E (pulse-echo) method with dual-element probes. The precision 0.1mm
ST-1D	ST-1 add work mode of E-E (echo-echo) and function of penetrating the coating, the material can be directly measured without necessarily removal of the oil paint
ST-2	P-E (pulse-echo) method with dual-element probes. The precision 0.01mm
ST-2D	ST-2 addition work mode of E-E (echo-echo) and function of penetrating the coating
ST-3	High precision(0.001mm), high resolution and ultra fine thickness measurements. Operating principle: I-E (interface-echo) mode with single-crystal delayed probe; E-E (echo-echo) mode with single-crystal delayed probe. With function of penetrating the coating
ST-4	Display Screen: 320×240 dot matrix, 2.4 inch color screen. A scan snapshot, zero passage measurement, adjusted gain, biggest/minimum value caught, difference/cut rate model,high/low limit alarm
ST-4D	ST-4 add work mode of E-E (echo-echo) and function of penetrating the coating
ST-5	Real-time color waveform A/B-scan. Can adjust gain, blanking, gate, range, delay, RF and rectify modes, B scan biggest/minimum value. Dynamic waveform and thickness color change on alarm.
ST-5D	ST-5 add work mode of E-E (echo-echo) and function of penetrating the coating





Ultrasonic Transducer & Probe Cable



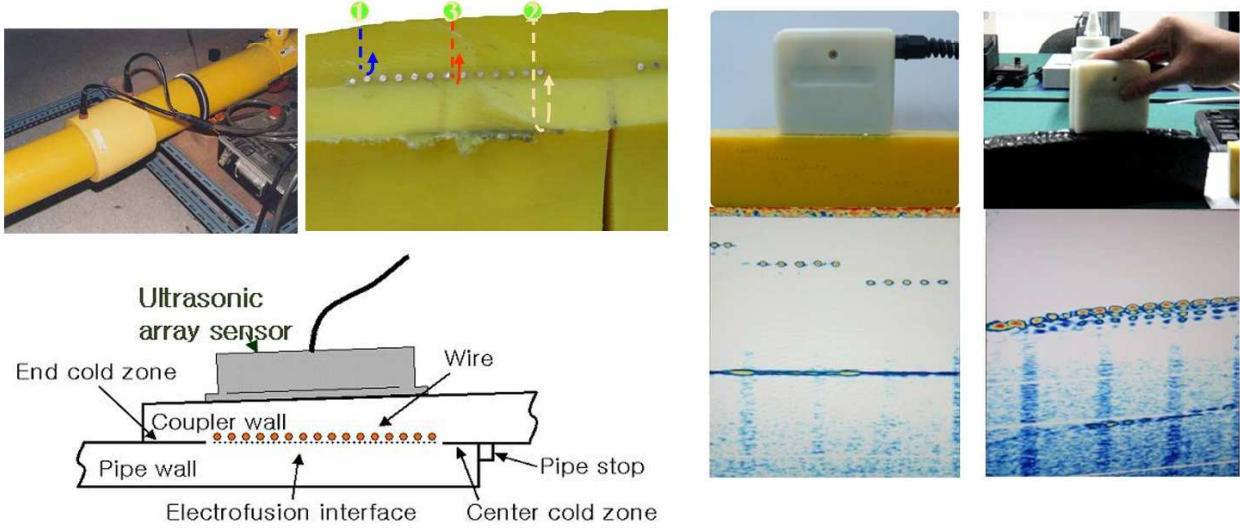
We can provide various Straight Beam, Straight Beam(add membrane), Angle Beam, Immersion, Dual Element, Dual Element Angle Beam, Variable Angle, Creeping Wave, Surface Wave Probe, and various probe cables.



*Provide customized service, welcome to tell the request and we will quote for you.

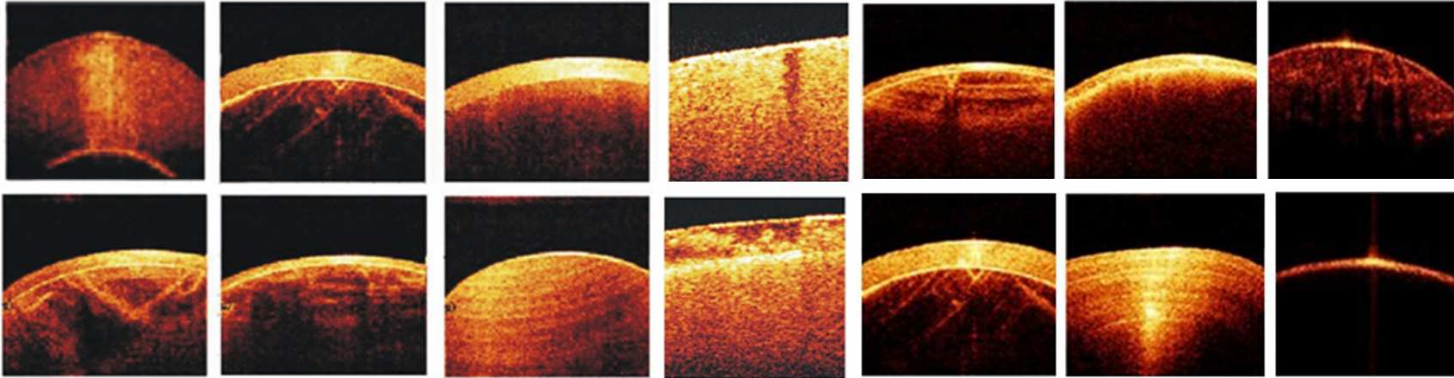
*If need Signal Waveform Graphic and Frequency Spectrum Graphic please tell us when order, and make graphic need add \$10 for per probe(if one time make for many probes the probe can lower).

B Imaging Scanner (Use for inspect plastic and composite material)



OCT (Optical Coherence Tomography) Thin Layer Imaging Detector

Application: Detection of pearl, coating materials and other thin translucent materials. Imaging depth up to 10 mm in highly scattering biological tissue.



SS/NDTC2012/A0



More information, please browse www.sonostar-ndt.com

Sonostar Technologies Co., Limited

Add: Yushu Building, Guangpu Road, Science city, Guangzhou, China

Tel: +86 20 32382095 MSN: sonostar@163.com Skype: sonostar-ut

Web: www.sonostar-ndt.com Mail: sonostar@sonostar-ndt.com